

Technical Data Sheet



Burdett's Tooborac Toppings

Burdett's Tooborac Toppings is a suitable substitute for Granitic Sand / Gravel. It has a light tan / brown colour as delivered.

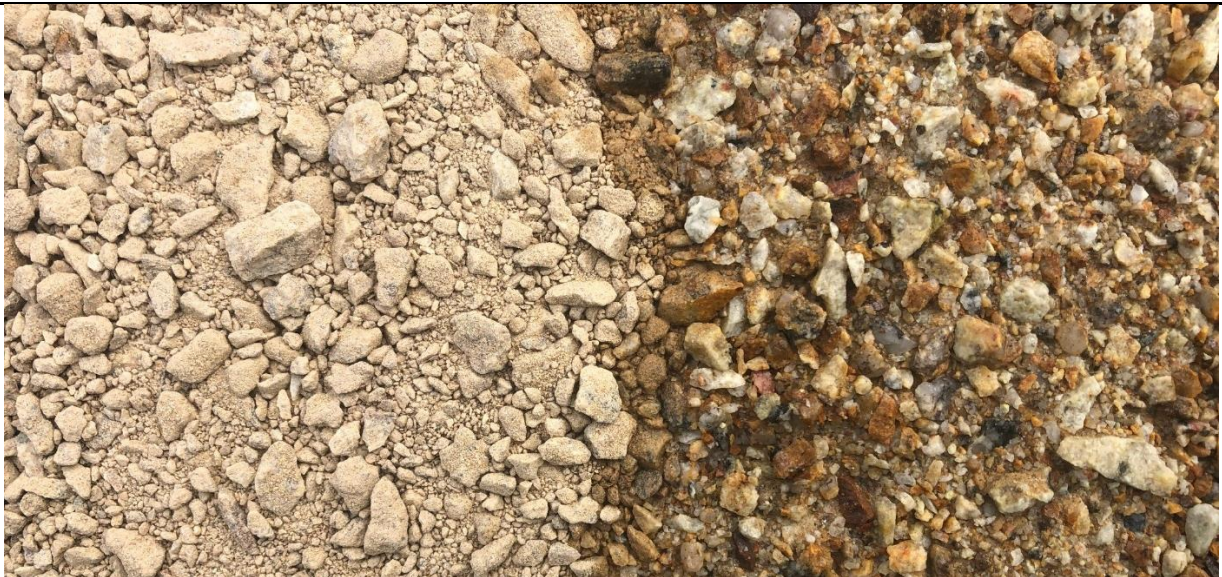
Tooborac Toppings can be used for driveways and pathways. With suitable compaction, such as a vibrating plate it will provide a firm base and can be further stabilised with cement at 3 – 5%.

Tooborac Toppings should ideally be placed at a depth of 50 – 75 mm over an equivalent thickness of solid base such as crushed rock.

Note: Colour and sizing may vary slightly as this is a natural product.

As delivered

After rain or washing



Nominal size: 14mm minus

Tooborac Toppings are available in bulk ex-bin or delivered.

Please contact sales for detailed information on availability and pricing.

Nov-23

IMPORTANT NOTICE: Above information is based on past test results and experience and is provided in good faith for assessment purposes only. This does not constitute a warranty made by any of the members of the Burdett Group. As Burdett's has no influence on the way in which these products are handled and used, we do not take any responsibility in this respect. You cannot rely solely upon this information to determine appropriate product use and must engage suitably qualified consultants to advise whether the product is fit for your end use.